

## ATLANTIS - XCAPE 76 - BY ATOLLVIC SHIPYARD

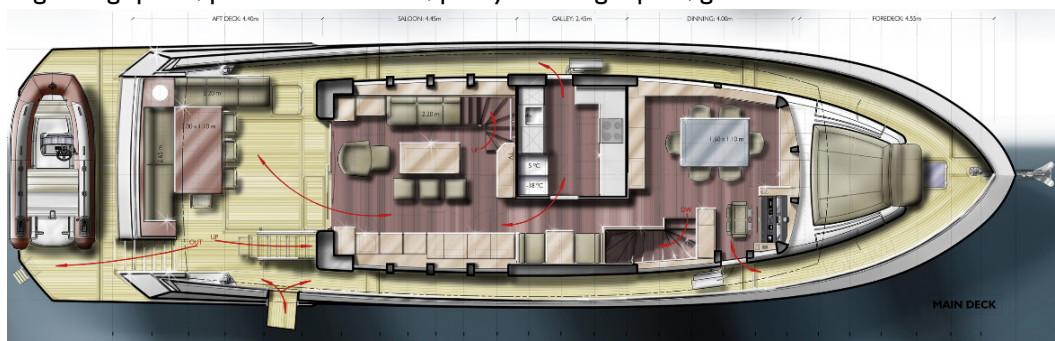
With strong architectural references, our design for this unfussy, yet handsome looking, aluminium 76ft / 23m family cruiser is for an experienced Spanish client, once the owner of a large fishing fleet, now since retired.



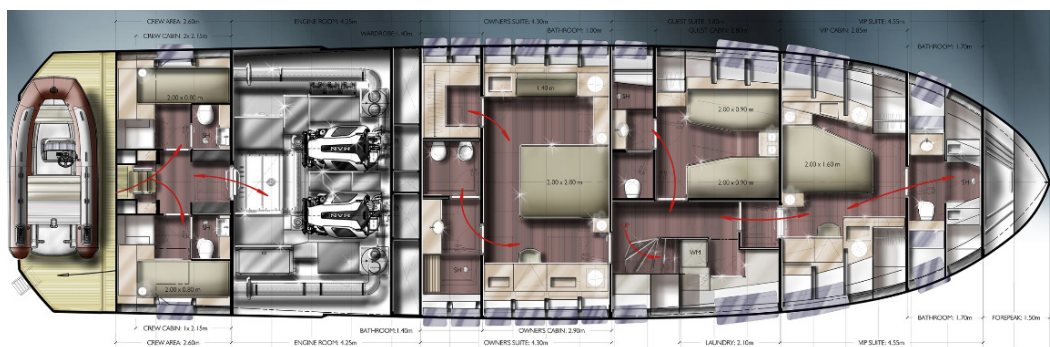
**LOA: 23.26m – Hull Length: 21.00m – Bmax: 6.13m – Draft: 1.10/1.90m – Displacement: 52Tm – Engines: 2x800Hp**

With the client now wishing to down-size from previously owned yachts, the brief was for owner-operated use for the majority of time, with long periods spent on board in private relaxation, with family and close friends.

Due for final completion summer 2018 by the Atollvic Shipyard in Vigo, NW Spain, the design is based upon a 'home from home' concept, with large living spaces, panoramic windows, plenty of storage space, generous bedrooms and wide-entry showers.



Seamanlike features including a multi-chine hull with full walk-around access and raised hand-rails for added safety. These were the kind of aspects deemed important for a highly experienced owner, with a great understanding of the sea.



**CLICK FOR 'MAKING OF' VIDEO**